

PlugFLO

Treatment Systems

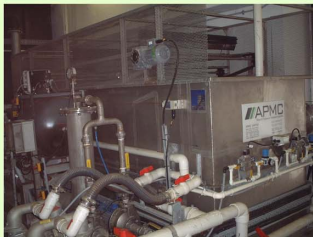


DAF

Environmental Technology

Clear Separation for a
Better Life Style

Dissolved Air Flotation System



General

The PlugFLO DAF is a rectangular, semi-plug-flow type with recycle of treated effluent to generate the dissolved air stream.

The DAF unit comprises two parts:

- The DAF tank and its accessories
- Recycle skid containing all the recycle and control equipment

The DAF tank consists of:

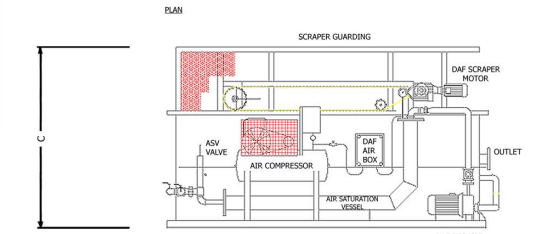
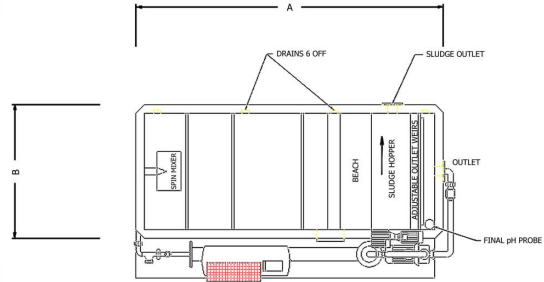
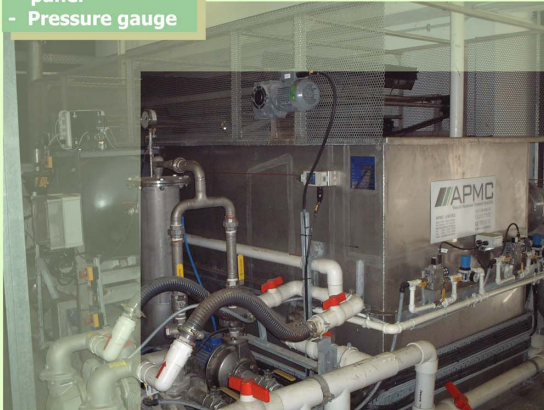
- 304 stainless tank body
- Surface scraper (chain and blade type)
- Galvanized perforated plate scraper guard
- Stainless steel scraper shafts and blades
- Nitrile rubber wipers
- Scraper drive motors
- Emergency stops

The recycle skid consists of:

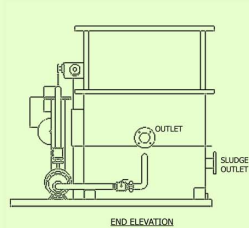
- Saturation pump (stainless steel head)
- Air compressor /air receiver
- Air saturation vessel (ASV)
- DAF control valve (stainless steel)
- Air control panel
- Electrical control panel
- Pressure gauge

System Performance

Waste Water Type	% Reduction		
	BOD	SS	Grease
Process Food	72	99	96
Cosmetics	81	97	99
Printing	99	99	90



Note:
Physical dimensions subject to adjustment to suite site condition and nature of wastewater



CAPACITY (m ³ /hr)	DIMENSION		
	A(mm)	B(mm)	C(mm)
5	3000	1800	2200
10	3000	2000	2200
20	4500	2500	2800
30	4500	2800	2800

Capacity: (m ³ /hr)	5	10	20	30
Tank body:	SS304	SS304	SS304	SS304
Water Inlet: (mm) (T.D. Flange)	80	100	150	150
Water Outlet: (mm) (T.D. Flange)	80	100	150	150
Sludge Outlet: (mm) (T.D. Flange)	50	50	50	50
Drains: (mm) (BSP Socket)	50	50	50	50
Length: (mm)	3,000	3,000	4,500	4,500
Width: (mm)	1,800	2,000	2,500	2,800
Height: (mm)	2,200	2,200	2,800	2,800
Power Requirement: (kw)	10.5	11.5	15.0	18.0

As ongoing product development, PlugFLO reserves the right to change product design at any time without prior notice.

Surface Scraper



The scraper is fitted with different types of blades which thicken the sludge whilst it is still in the DAF unit. This results in a very high solid content in the sludge (10-13 % typical for many effluent types), thus reducing the sludge volume for disposal.

Variable speed driven motor with overload and shear pin protection from jammed solid and for safety reason



The Systems



Air Saturation Vessel

The air saturation vessel is fabricated in 304 stainless steel and is a unique design incorporating a special mixing head (for mixing the air and recycled effluent).

Air Control Box

The ACP instrumentation regulates the air supply pressure and flowrate to ensure that sufficient air is supplied to the ASV to produce optimum "dissolved air" and ensures that excess air is not delivered to the ASV.

Control Valve

The control valve is made of 304 stainless steel specially design to feed air into the system for saturation and has self-cleaning feature.

Sole Agent :

